

A dark gray square with a subtle gradient, containing the letters 'HR' in a gold, serif font. The letters have a slight shadow effect, giving them a three-dimensional appearance.

HR

HORIZON  

---

RESIDENCE

# INTRODUCTION

Horizon Residence is Koh Samui's premier condominium development. Located only a 4 minute walk to Koh Samui's most beautiful beach, "Choeng Mon". The Horizon Residence location could not be better situated, the airport is only minutes away, as are the main restaurants, bars, shopping areas, and the night life of Chaweng.

Horizon Residence is offering its owners a fully managed investment and lifestyle opportunity. The stunning apartments and town houses will offer an unrivaled build quality, with a contemporary design. Providing modern living in an idyllic setting, the beautiful gardens and inviting pools will encapsulate the surroundings, and provide a peaceful environment for owners and guests to enjoy.

The high quality accommodation and ambient communal areas, including 3 communal swimming pools, a bar/restaurant, gym, and a professional team of hotel experienced staff, we will ensure that Horizon Residence will be a great place to stay for the abundance of tourists and owners that prefer the independence of staying in a "home from home".





The computer generated images in this document are merely an artist's impression and are not an exact representation of the appearance of the finished project, units or common areas, and the appearance and design of the finished project will differ from the images in this documents.

# HR

# HORIZON RESIDENCE



The town house designs, have been conceptualized to provide the perfect living space for a two story home. The living areas are both spacious and functional, providing plenty of room to be utilized and enjoyed. The kitchen and dining areas are separated from the living room, to allow for different activities to unfold simultaneously. The kitchen is separated from the walled in private garden by a glass panel sliding door, allowing for natural light, as well as creating a feeling of indoor-outdoor space. The bedrooms and en-suite bathrooms, are beautifully designed, and provide ample space for the occupants.

Great effort has been taken to provide each house its absolute privacy. The shared cavity walls between the houses are 250 mm thick, and extend well above the insulated ceilings, therefore providing high levels of sound insulation between each unit.

The town houses will be built utilizing high quality finishing and workmanship, whilst using only well documented quality materials. All electrical and plumbing works will be overseen by European foremen, providing all owners with the peace of mind that all of the technical work in the houses, are of the highest standards.





The computer-generated images in this document are merely an artist's impression and are not an exact representation of the appearance of the finished project, units or common areas; and the appearance and design of the finished project will differ from the images in this documents.

# Town House Floor Plans



UNIT TYPE

AREA

Town House A

123 sqm.

Town House B

127 sqm.

Town House C

143 sqm.

# FLOOR PLAN

## 2 Bedroom Town House A



1st Floor



2nd Floor

# FLOOR PLAN

## 3 Bedroom Town House B



1st Floor



2nd Floor

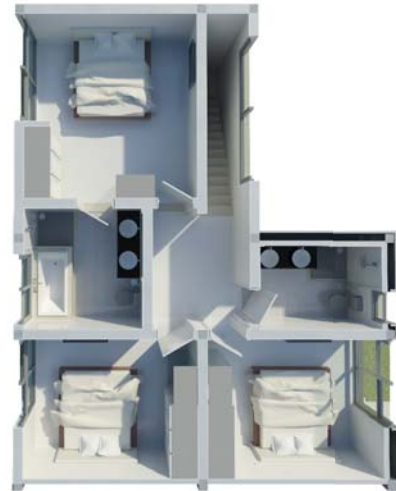


# FLOOR PLAN

## 3 Bedroom Town House C



1st Floor



2nd Floor



Discover Luxury in Paradise

# Horizon Residence Samui's premier condominiums

Location is always at the forefront of a property purchaser's mind, and in this regard the Horizon Residence does not disappoint.

Located 4 minutes' walk away from Choeng Mon beach and restaurants, and within a short drive to the Samui International Airport, Tesco Lotus, Home Pro, Cinema, Chaweng, Fisherman's Village and the Santiburi 18 Hole International Golf Course, it is no wonder why Choeng Mon is the preferred location for discerning tourists and residents alike.





HORIZON  

---

RESIDENCE

[www.horizon-residence.com](http://www.horizon-residence.com)